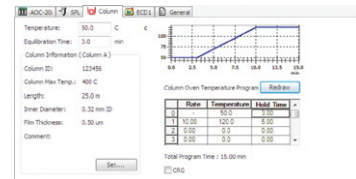


Shimadzu GC-2010 Plus and GC-2014 gas chromatographs can now be controlled using Waters Empower™ chromatography data systems. This control enables use of these compact GCs, which feature detectors with the world's highest sensitivity levels and deliver high-precision analysis with excellent peak reproducibility, in an Empower™ environment.

Control Shimadzu GC-2010 Plus and GC-2014 Units Using Waters Empower™ Waters Empower™/Shimadzu GC Driver Version 1

Seamless Control of Shimadzu GC Units

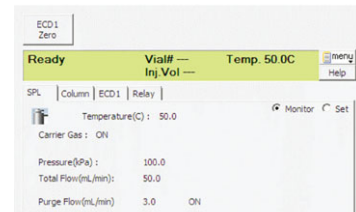
Set Shimadzu GC instrument parameters via the instrument method editing window in Empower™ and save as an instrument method. Achieve seamless control of GC-2010 Plus and GC-2014 units for functions ranging from the control panel and report output to audit trails.



GC Parameter Setting

Ease of Use for Instrument Status Check and Methods Creation

The Shimadzu GC control panel displayed in the sample analysis window in Empower™ includes functions to directly control Shimadzu GC units, such as switching the carrier gas or detector gas, or GC system ON/OFF. In addition, it includes such features as a monitor function that allows confirming the respective temperatures of the sample injection port, column oven, and detector, or the flow rate and pressure of carrier gas, and a system check function that displays the operating status of consumables. This helps with monitoring the instrument operating status during analyses and with routine instrument inspections. Furthermore, since separate instrument method editing windows are available for each device, even first-time users can set GC unit parameters easily.



GC Control Panel Window

Acquire and Manage Analytical Data Digitally

All detector signals are acquired digitally. Therefore, no SAT/IN™ or other analog/digital converter is necessary. Gas pressures, column oven temperatures, and other instrument status information are stored as channel data during analyses

Products Lineup

Description	Empower System Configuration
Single License - Shimadzu GC Driver for Empower™	Same for all Personal, Workgroup and Enterprise Versions
Four Licenses - Shimadzu GC Driver for Empower™	Same for both Workgroup and Enterprise Versions

Note:

- Shimadzu GC driver software for Empower™ is compatible with Empower™2 FR3 or later versions. To install the driver in existing Empower networks, please provide the Empower™ version and other relevant information in advance.
- Only one Shimadzu GC unit can be connected using the Personal version of Empower™.
- The Empower™ software is also available from Shimadzu. For more details, contact your Shimadzu representative.

Controllable Hardware

GC units GC-2010, GC-2010 Plus, or GC-2014

Optional accessories AOC-20i autoinjector and AOC-20s autosampler

Unit	Unit Name
Sample injection port	GC-2010 (Plus) : SPL-2010 (Plus), WBI-2010 (Plus), OCI / PTV-2010 GC-2014 : SPL-2014, WBI-2014, DINJ-2014, SINJ-2014
Detector	GC-2010 (Plus) : FID-2010 (Plus), TCD-2010 (Plus), ECD-2010 (Plus), FPD-2010 (Plus), FTD-2010 (Plus) GC-2014 : FID-2014, TCD-2014, ECD-2014, FPD-2014, FTD-2014(C)
Additional flow controller	APC (3 auxiliary channels), AMC (2 auxiliary channels) Note: AMC is optional on the GC-2014
Low-temperature oven controller	GC-2010 (Plus) : CRG-2010 low-temperature control solenoid valve unit GC-2014 : CRG solenoid valve

- Note:
- Auxiliary temperature control units, A/D boards, and PRG-2010 (Plus) or PRG-BOX (Plus) units cannot be controlled.
 - Not compatible with dual-injection systems.
 - A maximum of 4 Shimadzu GC units can be controlled from a single data acquisition server (such as LAC/E32).
 - Shimadzu GC and LC drivers for Empower™ can be installed on the same computer or data acquisition server.
 - A Shimadzu GC unit and Agilent GC system cannot be connected simultaneously to the same data acquisition server (such as LAC/E32). Provide a separate dedicated data acquisition server for the Shimadzu GC unit.

Note: Empower™ and SAT/IN™ are trademarks of Waters Corporation in USA and other countries.

Founded in 1875, Shimadzu Corporation, a leader in the development of advanced technologies, has a distinguished history of innovation built on the foundation of contributing to society through science and technology. We maintain a global network of sales, service, technical support and applications centers on six continents, and have established long-term relationships with a host of highly trained distributors located in over 100 countries. For information about Shimadzu, and to contact your local office, please visit our Web site at www.shimadzu.com



JQA-0376



SHIMADZU CORPORATION. International Marketing Division

3. Kanda-Nishikicho 1-chome, Chiyoda-ku, Tokyo 101-8448, Japan

Phone: 81(3)3219-5641 Fax: 81(3)3219-5710

URL <http://www.shimadzu.com>

Printed in Japan 3295-09006-50ANS

The contents of this brochure are subject to change without notice.